



CHATTERTON | REES



Riverside Quarter 1 Eastfields Avenue, London, SW18 1FQ
Asking price £899,000





Riverside Quarter 1 Eastfields Avenue

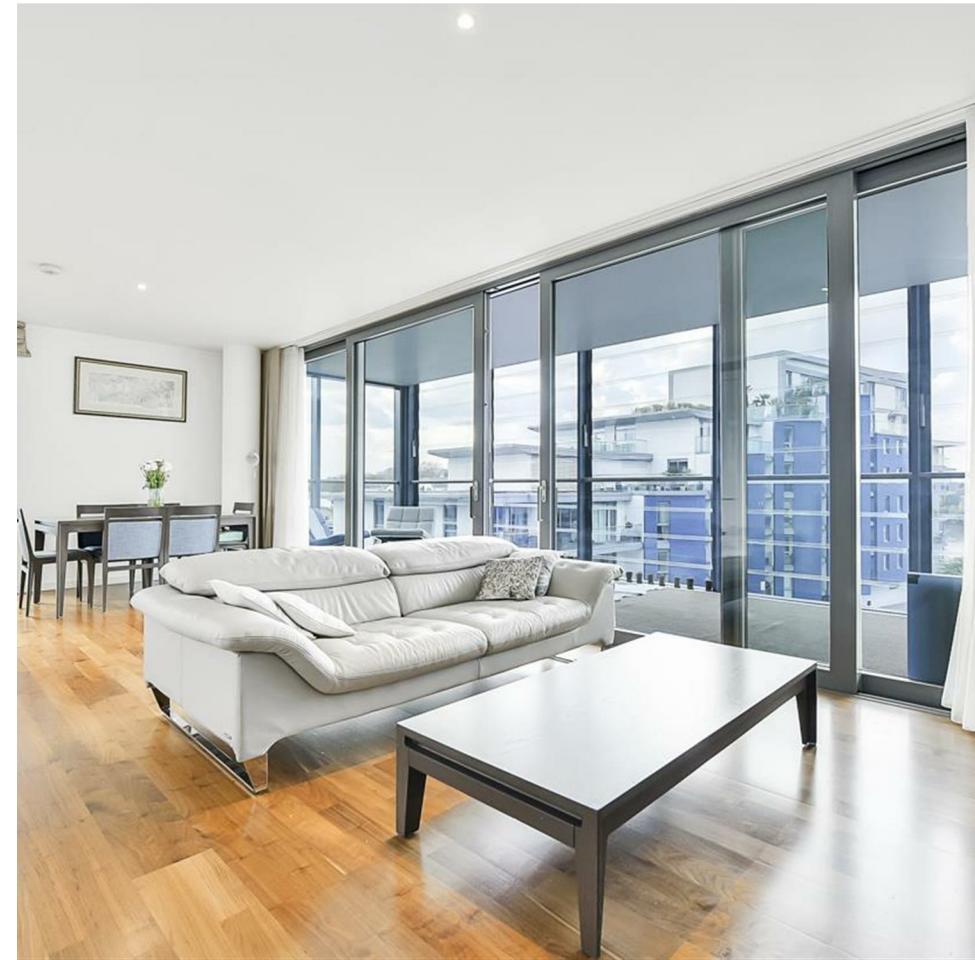
London, SW18 1FQ

- Two Bedrooms
- River Views
- Concierge
- Two Bathrooms
- Spa and Gym
- Two Parking spaces

On offer is a stylish and spacious 2 double-bedroom apartment overlooking the River Thames. This 4th-floor riverside property includes 2 bathrooms, 2 underground parking spaces, 1 Storage unit, 24-hour concierge, 2 gyms, 2 spas, and 2 pool facilities. No other Riverside Quarter Winter Balcony property includes 2 side-by-side underground parking bays, an extremely desirable feature of this property.

One Eastfields Avenue is part of the exclusive Riverside Quarter development which is well known for its excellent facilities, including a full-fitted gym, swimming pool, and jacuzzi with river views, sauna, steam room, and locker rooms. Owners will love the peace and quiet of riverfront living and the activities in the surrounding area with Wandsworth Park at your doorstep along with local bars, restaurants, supermarkets, late-night grocery stores, and Wandsworth Centre.

Asking price £899,000





Directions

There is a free shuttle service available for residents during peak commuting hours to drop off and pick up from local stations as well as the river taxi. The nearest stations are Wandsworth Town Station which is overground into Waterloo and East Putney Station which is the District Line Tube.

